

SIGNAL[™] 4.0

Quick Start Guide

Welcome to SIGNAL 4.0 ! Please read before installing.

Instructions

1. If you purchased a computer with SIGNAL, then the software you ordered is already installed on the computer. Go to "Getting Started with SIGNAL" below.
2. If you are installing SIGNAL on your own computer, start with "Installing SIGNAL".
3. You must **install SIGNAL 4.0 before installing other software from Engineering Design**, such as NIDisk[™] or the Event Analyzer[™].
4. SIGNAL 3.x users upgrading to SIGNAL 4.0 **must return their SIGNAL 3.x security key to Engineering Design**, as described in *Replacing the SIGNAL 3.x Security Key with the SIGNAL 4.0 Security Key*, packed with these instructions.
5. SIGNAL updates are periodically available on-line. See "SIGNAL Updates" for details.

Installing SIGNAL

Follow these steps to install SIGNAL 4.0.

1. Insert the SIGNAL 4.0 distribution CD in the drive.
2. The SIGNAL setup program should start automatically. If not, open the CD in Windows Explorer and double-click on setup.exe.
3. Follow the prompts in the setup program. All default settings are recommended.
4. The SIGNAL install program will launch a separate installer for the SIGNAL security key.
 - If the installer presents a Confirm Upgrade screen, approve the upgrade.
 - At the Destination Folder screen, accept the default destination.
 - At the Setup Type screen, select **Complete** (not Custom) if you are installing SIGNAL for the first time, or **Modify** (not Repair or Remove) if you are reinstalling SIGNAL, then select the defaults for subsequent choices.
 - At the Ready to Install the Program screen, click Install to proceed.
 - **Do not restart the system** if asked, because this will abort the SIGNAL installer.
 - Click Finish to exit the key installer and return to the SIGNAL installer.

5. At the Signal 4.0 Setup:Completed screen, allow the computer to restart, or restart the system manually. **The system must be restarted before running SIGNAL for the first time.**
6. Install the SIGNAL 4.0 security key on the parallel or USB port, depending on the key. **SIGNAL 3.x users upgrading to SIGNAL 4.0 must return their SIGNAL 3.x security key to Engineering Design.** See the separate handout *Replacing the SIGNAL 3.x Security Key with the SIGNAL 4.0 Security Key* for instructions.

Installing Direct-to-Disk Data Acquisition Programs

If you ordered an Engineering Design direct-to-disk data acquisition program, such as CBDisk™, DartDisk™, DTDisk™, NIDisk™ or WaveDisk™, these are provided on a separate CD. For installation instructions, open the CD in Windows Explorer and double-click on the file readme.txt. **You must install SIGNAL 4.0 before installing the data acquisition program.**

Installing other Engineering Design software

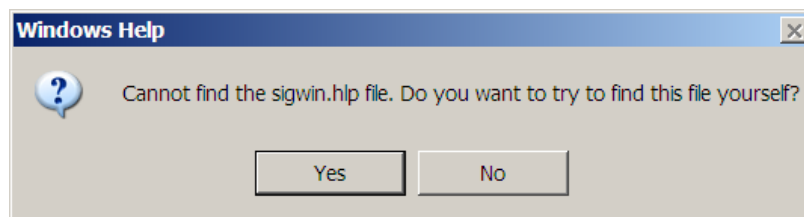
If you ordered other software from Engineering Design, such as the Event Analyzer™, this software is provided on a separate CD. For installation instructions, open the CD in Windows Explorer and double-click on the file readme.txt. **You must install SIGNAL 4.0 before installing this software.**

Installing Analog I/O Hardware

If you ordered analog I/O hardware from Engineering Design, install it according to the instructions for the appropriate manufacturer in Appendix C, "I/O Hardware Installation" in the *SIGNAL 4.0 Reference Guide*. **Do not use the installation instructions provided by the hardware manufacturer** except as instructed in Appendix C.

Getting started with SIGNAL

1. To run SIGNAL, click the Signal 4.0 icon on the desktop, Start menu, or Programs menu.
2. The first time you access the Help system (via Help | Contents & Index or Help *cmd*), SIGNAL may report the following:



Click Yes and browse to the SIGNAL root directory (normally c:\Program Files\Engineering Design\Signal 4.0). Select sigwin.hlp, and click Open. This registers the help file for subsequent use.

3. If SIGNAL reports an error with the security key, see Appendix B, "Hardware Reference", in the *SIGNAL 4.0 Reference Guide* for troubleshooting and installation instructions for the security key.

4. See Chapter 3, "Getting Started with SIGNAL" and Chapter 4, "Learning SIGNAL" in the *SIGNAL 4.0 Reference Guide* for an overview of SIGNAL for Windows and its learning tools.
5. For SIGNAL 3.1 users, the Appendix to the *SIGNAL 4.0 New Features* guide documents changes in SIGNAL 4.0 and how to convert SIGNAL 3.1 command files. **Note:** this document was written for SIGNAL 4.01.02 and may omit some features of the current SIGNAL.
6. SIGNAL 4.0 does not perform acquisition and playback directly. It reads sound files that have been acquired by other I/O programs such as the Engineering Design direct-to-disk data acquisition programs CBDisk™, DartDisk™, DTDisk™, NIDisk™ or WaveDisk™. Playback can be performed from the screen and command line using a PC sound card or sound chip. See Chapter 9 in the *SIGNAL 4.0 Reference Guide* for details.

System requirements

1. SIGNAL 4.0 requires a minimum of 128 MB of RAM for Windows 95, 98, and 2000 and 256 MB for Windows XP, however, additional memory is strongly recommended. See Chapter 32, "Memory Allocation" in the *SIGNAL 4.0 Reference Guide* for details.
2. SIGNAL 4.0 requires about 35 MB of hard disk space.
3. SIGNAL 4.0 is compatible with Windows 95, 98, 2000 and XP, and has not been tested with Windows Me or NT.

SIGNAL documentation

SIGNAL 4.0 documentation is provided in **PDF format only**, and is installed in the \docs directory under your SIGNAL installation directory (for example, c:\Program Files\Engineering Design\Signal 4.0\docs). **No hardcopy guides are available.**

1. The *SIGNAL 4.0 Reference Guide* has been completely revised, and covers the SIGNAL command language, SIGNAL for Windows features, and conceptual background in bioacoustic analysis.
2. The *SIGNAL 4.0 New Features* guide documents features that are new in SIGNAL 4.0, for SIGNAL 3.1 users.
3. SIGNAL add-on modules such as **Event Detector™** and I/O programs such as **NIDisk™**, **WaveDisk™** and **DTDisk™** are documented in their own guides in the \docs directory.

SIGNAL updates

SIGNAL 4.0 updates contain new features, program revisions, and revised documentation and help materials. **These updates are available at no charge to SIGNAL 4.0 users.** Registered SIGNAL 4.0 users are notified of update releases by email and updates are announced in the Support page on the website. If in doubt, send your email address to info@engdes.com. Updates are available **only** via download from the Engineering Design website; no physical media are provided.

Upgrading your SIGNAL license

Your SIGNAL 4.0 license can be upgraded to add modules such as the Real-Time Spectrogram (RTS), Event Detector, or Event Analyzer. This process can be performed on-line, without software diskettes or CDs. You simply order the upgrade, receive a code from Engineering Design by email, then install this code in SIGNAL. For details, click Tools|License Info on the SIGNAL 4.0 menu, then click How to Upgrade, or see the Sales section of the Engineering Design website (www.engdes.com).

Engineering Design

262 Grizzly Peak Blvd
Berkeley, CA 94708 USA

Tel / Fax 510-524-4476
www.engdes.com